



# EHSSSENTIALS 2018

Environmental, Health & Safety Symposium for Healthcare

**October 25, 2018**  
**Stanford University**  
**Medical Center**  
**Palo Alto, CA**



PRESENTED BY

**bsi.**

 **KAISER PERMANENTE®**



**Stanford**  
**HEALTH CARE**  
STANFORD MEDICINE

## Healthcare Coalition Overview

Marina Zamarron, MPA  
Health Planning Specialist III  
Santa Clara County Public Health  
Emergency Preparedness



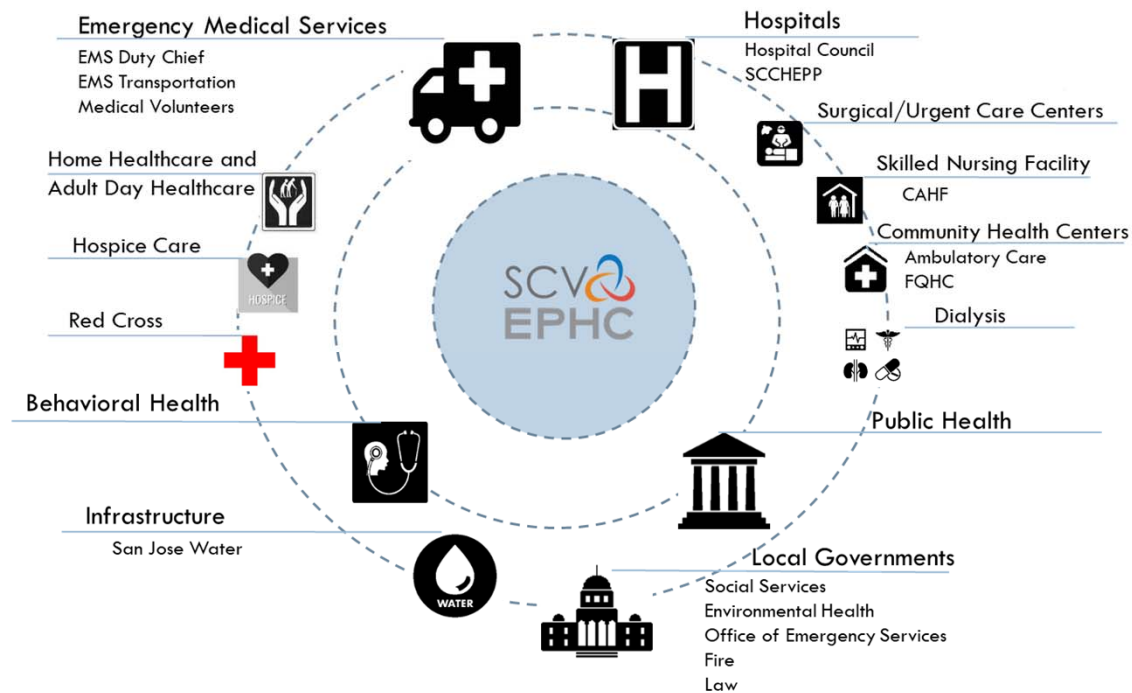
**EHSS**ENTIALS 2018

Environmental, Health & Safety Symposium for Healthcare

## Our Mission

- Foster relationships among healthcare communities throughout the County.
- Promote emergency planning across all healthcare sectors.
- Reduce gaps and weaknesses in healthcare communities.
- Ensure a coordinated response to emergency or disaster.

# EPHC: Partnerships at a Glance



## EPHC Facility Readiness

- Promote Facility Readiness with healthcare delivery partners.
  - Responsible for patient care during disaster
    - Individual patient emergency plans for in-care and home bound
  - Share information, provide facility updates, and forecast needs to MHOAC
  - Enact surge plans during a disaster
  - Assist in maintaining healthcare delivery during a disaster

## EPHC: Roles and Responsibilities

- Maintain Emergency Communications with MHOAC
- Maintain Existing Services
- Support Mutual Assistance



## EPHC 2018 Hazard Vulnerability Assessment Analysis:

- Top Hazards for Healthcare Facilities in Santa Clara County
  - Earthquake
  - Structural Damage
  - Evacuation
  - Communications System Failure
  - Mass Casualty Infectious Disease/Epidemic
- Emerging Hazards
  - Extreme Weather Conditions
  - Fires



# Haywired Exercise Earthquake Scenario



- A 33% chance of a 6.7 Hayward fault in the next 30 years (Wein, 2018)
- Expected impacts depending on location may be:
  - Long term power outage
  - Loss of roadways/rail system
  - Long term water disruption
  - Limited staffing resources due to local area housing costs
  - Immediate need for hospital surge due to evacuating hospitals in neighboring counties

## 2017 Northern California Firestorm

- Evacuation: Any hazard can result in evacuation.
- The Northern California Firestorm were a series of 250 wildfires that started burning in early October of 2017.
- 21 became major fires.
- Impacts as a result to exposure to wild fire(Kesterson, 2018):
  - Over 90,000 people were evacuated
  - No-notice event forced two hospitals to evacuate
  - 8 Skilled Nursing Facilities and 16 Long Term Care Facilities evacuated
  - Interrupted services for dialysis, home health, community health clinics, and hospice care due to closures and evacuation

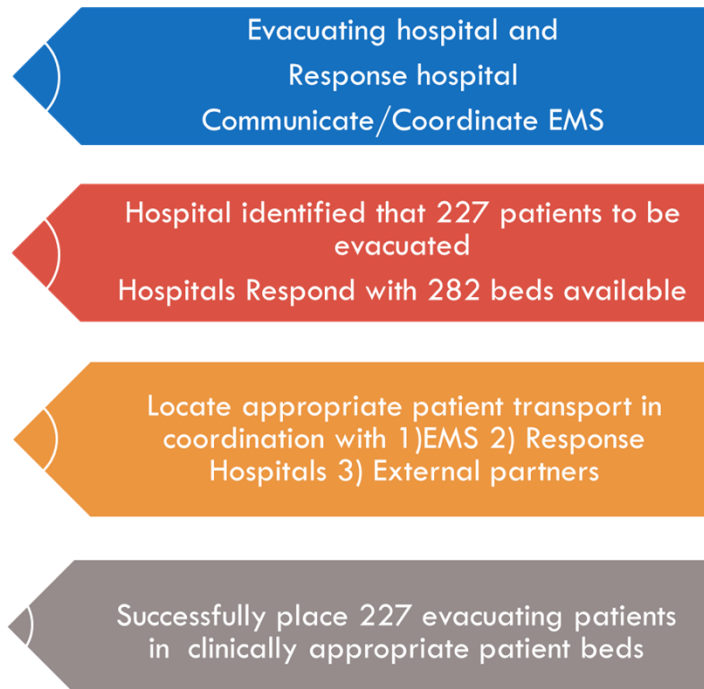
## EPHC Communications

- Emergency Communications Directory
- Facility Status
- Resource Requesting
- Facility EOC Organization Chart
  - Liaison Officer
  - Incident Commander

## Coalition Surge Test (CST) - 2018

- **Purpose** To challenge the Santa Clara County Healthcare System by exercising disaster medical surge capabilities during a low/no-notice exercise.
  - Evacuate 20% of the staffed hospital acute care beds within 90 minutes

# 2018 Coalition Surge Test Results



## Healthcare Coalition Overview

<b>High</b>	<b>Incident Complexity</b>	Optional Training Opportunity		One or More Specialized FEMA-Course: 1) FEMA FRAME 2) FEMA HCL 3) FEMA HERT
				Leadership Role in the Coalition
				Specialized Course
<b>Low</b>	<b>Incident Complexity</b>	Advanced		Coalition Surge Test
				Tabletop Exercises
				Annual Exercise/Real Event
				Communication Drills
<b>Low</b>	<b>Incident Complexity</b>	Intermediate		Annual HVA Meeting
				Bi-Annual Meeting
				IS 546
				IS 201
<b>Low</b>	<b>Incident Complexity</b>	Basic	IS 100	IS 200.hca
			IS 700	
			IS 606	

Training determined by Incident Complexity

## Healthcare Coalition Overview

EPHC Advisory Board

Santa Clara County  
Hospital Emergency  
Preparedness  
Partnership  
(SCCHEPP)

EPHC Education  
Committee

Medical Needs Shelter

California Association  
of Healthcare Facilities  
(Skilled Nursing)

### Active Work Groups

## Promoting Cross Sectional Partnerships

- Adopt a Workgroup
- Health leaders are engaged in various EPHC workgroups
  - Advisory Board
  - Education Committee
  - Allied Healthcare
  - Medical Needs in General Population Shelter



## Outreach/Recruitment

- Engaged in different Committees
  - City Emergency Managers Association
  - Mass Care and Shelter
- EPHC members share at different venues
  - Joint Commission Conference
  - National Healthcare Coalition Conference
  - CPCA Emergency Preparedness Conference
  - CDPH Emergency Preparedness Conference
  - Region 2 partnerships, Santa Cruz County

## SCCHEPP Group: An Established Model for EPHC Coalition

- SCCHEPP Members
  - Established in 2007
  - Santa Clara County Hospitals Emergency Managers, County and City Emergency Management, County Fire, Surgical Centers
- What Does SCCHEPP Do?
  - Develop and coordinate exercises
  - Share information
  - Enhance compliance through shared experience
  - Evaluate availability of local resources
  - Evaluate city and hospital mutual aid resources
  - Exchange emergency planning ideas

## Value Added for SCCHEPP

- Annual Multi-Hazard Vulnerability Assessment
  - Share, compile, and review HVA data for hospitals
- Leaders in the Hospital Emergency Management Field
  - Promote peer to peer coaching
  - Shared Vision – Improve healthcare emergency response at the county level
- Shared benefit for participation
  - Activate and practice Mutual Aid Agreements

## EPHC Education Committee

- What we do:
  - Train on the four core CMS Rules for emergency preparedness
  - Membership driven
    - Utilize our members subject matter experts to design annual education plans
  - Follow Homeland Security Exercise and Evaluation Program (HSEEP)
    - Provides common framework when designing exercise programs

## EPHC Education Committee

- EPHC Education Committee Purpose:
  - Accomplishes training objective identified in the EPHC Strategic Plan in October 2015
  - Our goal is to increase knowledge of emergency planning strategies and coordination with healthcare partners
  - In year 2017
    - 1) Increase compliance of new CMS emergency rules with healthcare partners
    - 2) Prepare partners for participation in the annual Statewide Medical Health Exercise
  - Localized Certification Program to set education standard

## Benefits of EPHC Membership

### Shared Vision

EPHC members follow standardized requirements for emergency planning:

- CMS rules for emergency preparedness program
- Joint Commission standards
- Identify hazards annually
- Participate in exercises

### Synergy in Membership

EPHC sets higher benchmarks for emergency response:

- Follow the CMS rules
- Peer support for compliance
- Promote pre-event collaboration
- Build responder collaboration
- Plan and train to identified hazards

### Savings

EPHC provides opportunities for professional growth:

- Training, capacity building
- Leadership, collaboration
- Share best practices
- Member driven education planning and implementation
- Coaching from local subject matter experts

#### Measurable Effectiveness:

- Countywide Hazard Vulnerability Analysis and Identified Gaps
- Improved Response Efforts
- Financial Return on Investment when planning and coordinating efforts

## Healthcare Coalition Overview

### Understanding the New CMS Rules for Emergency Preparedness

#### Risk Assessment and Planning

- Annual Hazards Vulnerability Assessments
- Assessment of Patient Population
- Ability to Provide Services During an Emergency



#### Policies and Procedures

- Establish Emergency Operations and Communications Plan, Evacuation / and or Sheltering Plan, Continuity of Operations, Succession Planning
- Patient and Staff Tracking Capability
- Secure Confidential Information
- Volunteer and Emergency Staffing Integration
- Mutual Aid Agreement



#### Communications Planning

- Internal and External Communications Plan
- Situational Awareness and Bed Availability Communications with County Public Health Office



#### Training and Testing

- Annual Facility Training
- Annual Tabletop and Functional/Full-Scale Exercise
- After Action Report

